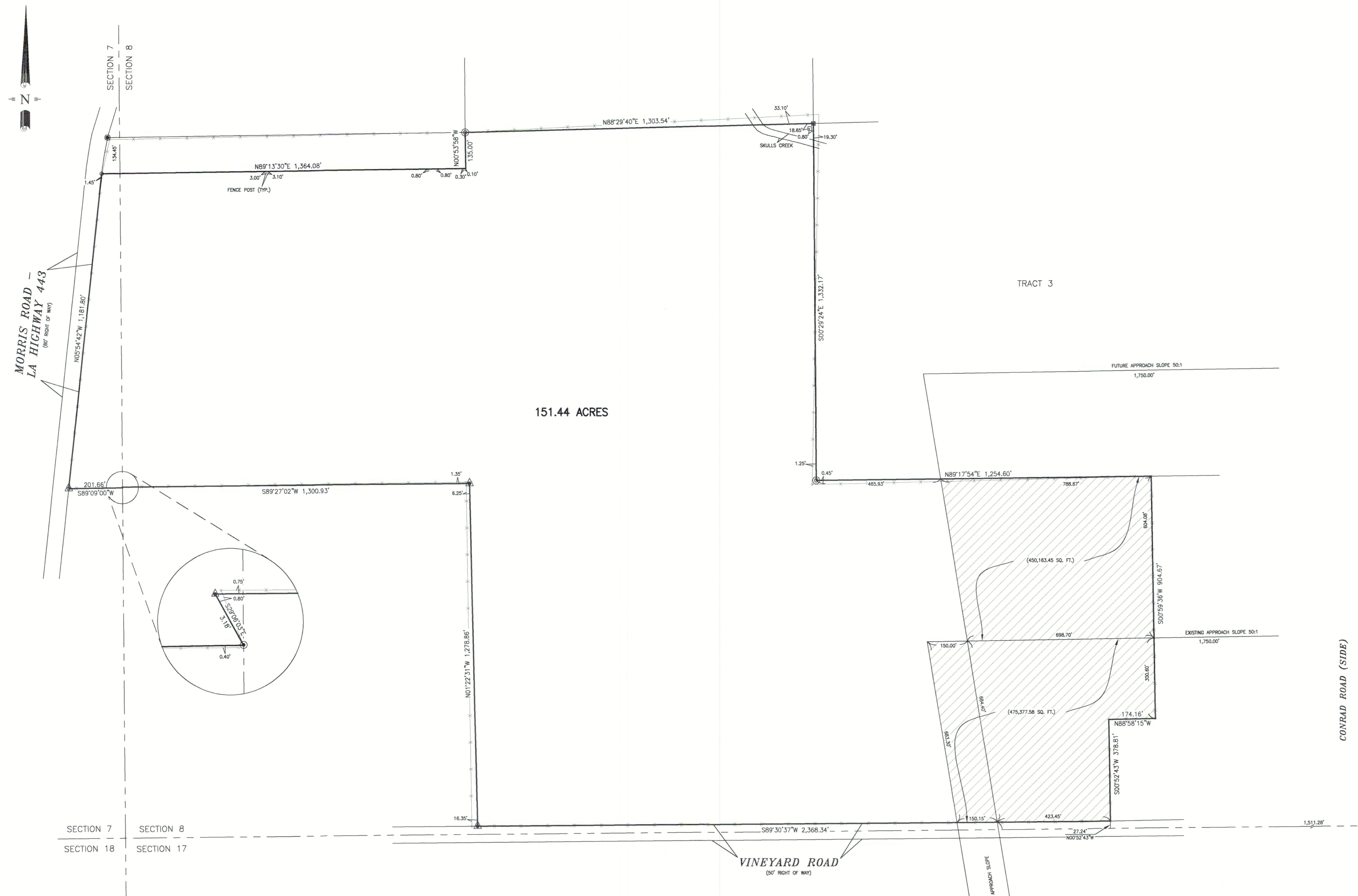
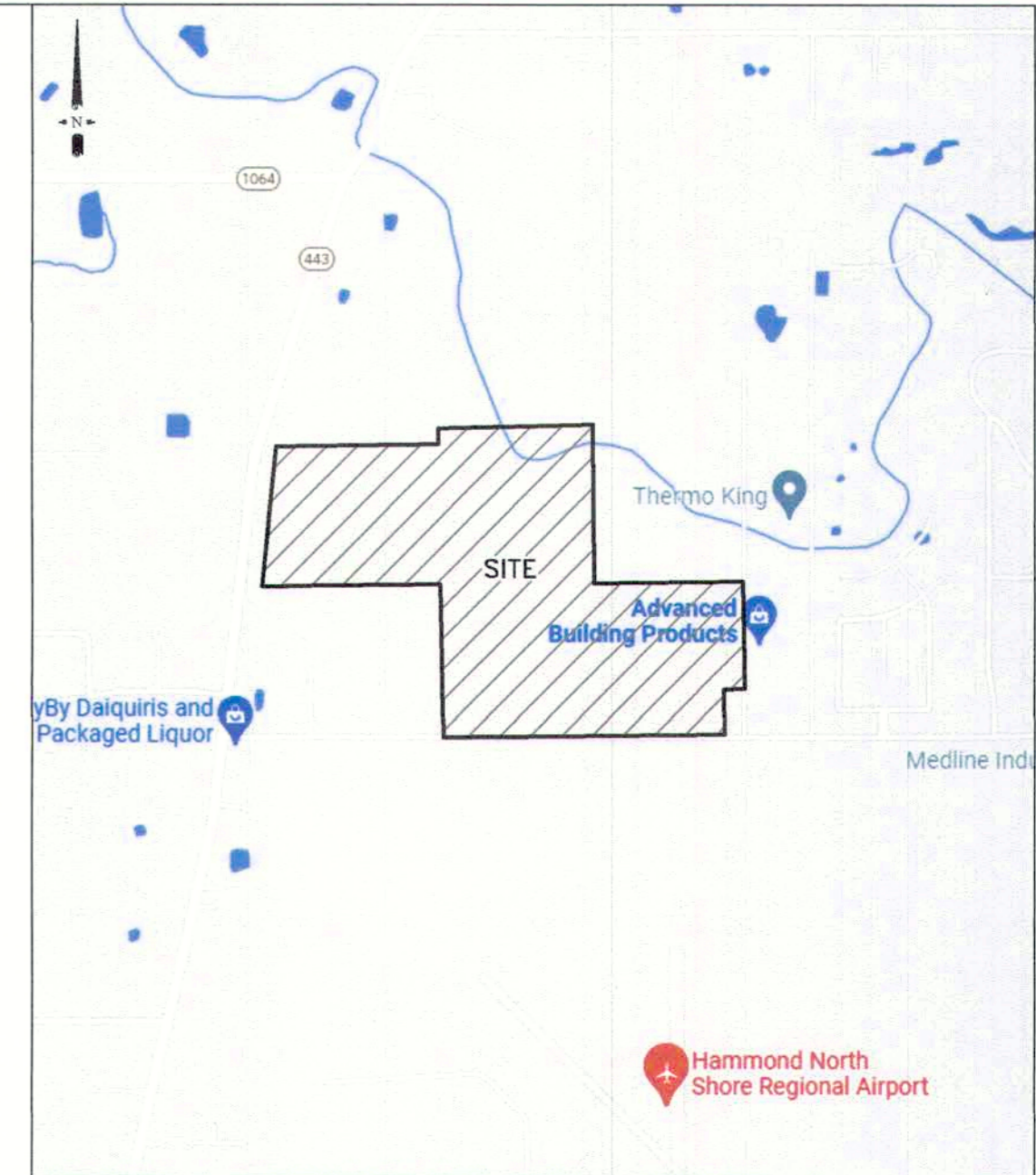


ROBERT ROAD (SIDE)



151.44 ACRES



VICINITY MAP
(NOT TO SCALE)

SURVEY REFERENCE

1. SURVEY OF AN 157.06 ACRE PARCEL BY WILLIAM J. BODIN, JR., DATED MARCH 22, 1995.
2. LOT LINE REVISION BETWEEN 2 PARCELS OF LAND BY ANDREW N. FALLER, P.L.S., DATED JUNE 12, 2015.

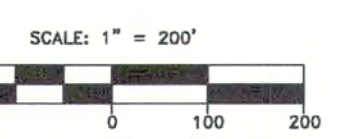
BEARING BASIS

BEARINGS HEREON ARE ESTABLISHED BY THE LOUISIANA STATE PLANE COORDINATE SYSTEM, LOUISIANA SOUTH ZONE USING LSU C4G NETWORK SOLUTION ON 10-18-2021 NAVD 88/NAD 83 GEOID 12A.

GENERAL SURVEY NOTES

IMPROVEMENTS MAY NOT BE TO SCALE FOR CLARITY. THE DIMENSIONS SHOWN PREVAIL OVER SCALE.

- LEGEND**
- X = CROSS FOUND
 - o = 1/2" IRON ROD FOUND
 - o = 3/4" PIPE FOUND
 - o = 1" PIPE FOUND
 - o = 1 1/2" PIPE FOUND
 - o = 2" PIPE FOUND
 - o = 2 1/2" PIPE FOUND
 - o = 3" PIPE FOUND
 - o = FENCE
 - hatched area = ENCUMBERED



AREA CHART		
	SQUARE FEET	ACRES
UNENCUMBERED	5,670,813.54	130.18
ENCUMBERED	925,541.03	21.25
TOTAL	6,597,354.57	151.43

SURVEY OF A 151.44 ACRE PARCEL SITUATED IN SECTIONS 7 & 8 TOWNSHIP-6-SOUTH, RANGE-8-EAST CITY OF HAMMOND TANGIPAHOLA PARISH, LOUISIANA			
I CERTIFY THAT THIS SURVEY AND PLAT WAS PREPARED BY ME OR BY THOSE UNDER MY DIRECT SUPERVISION, MADE AT THE REQUEST OF: GULF STATES REAL ESTATE SERVICE			
DATE: 10-18-2021	SCALE: 1" = 200'	DRAWN BY: L.M.	CHECKED BY: C.A.D.
		JOB NO.: 61025	SHEET: 1 OF 1