



Contact Information



Ginger Cangelosi
Executive Director, Tangipahoa Economic Development
gcangelosi@tangipahoa.org
206 E. Mulberry Street
Amite City, LA 70422
985.940.9028 office
www.tangipahoa.org

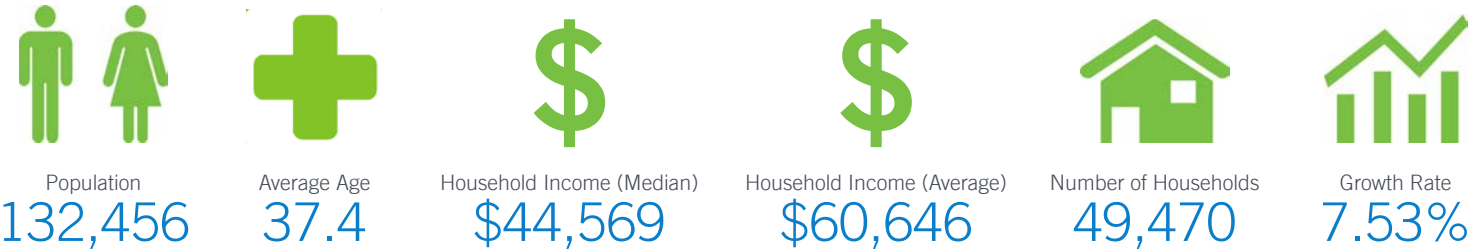
Focus Properties

Retail Strategies has a catalogue of retail commercial real estate properties in this market.



For more information, please contact the Portfolio Director and/or Retail Development Director listed on the front of this guide.

Demographics (Parish Boundary)



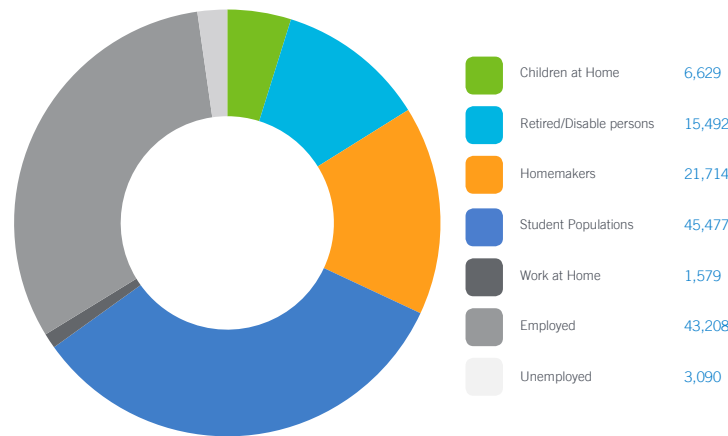
Peer Analysis

The Peer Analysis, built by Retail Strategies along with our analytics partner (Tetrad), identifies analogue retail nodes within a similar demographic and retail makeup. The Peer Analysis is derived from a 5 or 10 minute drive time from major comparable retail corridors throughout the country. The variables used are population, income, daytime population, market supply and gross leasable area. The following are retail areas that most resemble this core city:

Peer Trade Areas

- Alexandria, LA 2206 Memorial Dr
- Tyler, TX 7003 S Broadway Ave
- Houma, LA 1727 Martin Luther King Jr Blvd
- D'iberville, MS 3867 Promenade Pkwy
- Olive Branch, MS 5150 Goodman Rd
- Decatur, AL 1235 Point Mallard Pkwy SE

Daytime Population 137,789 (Parish Boundary)

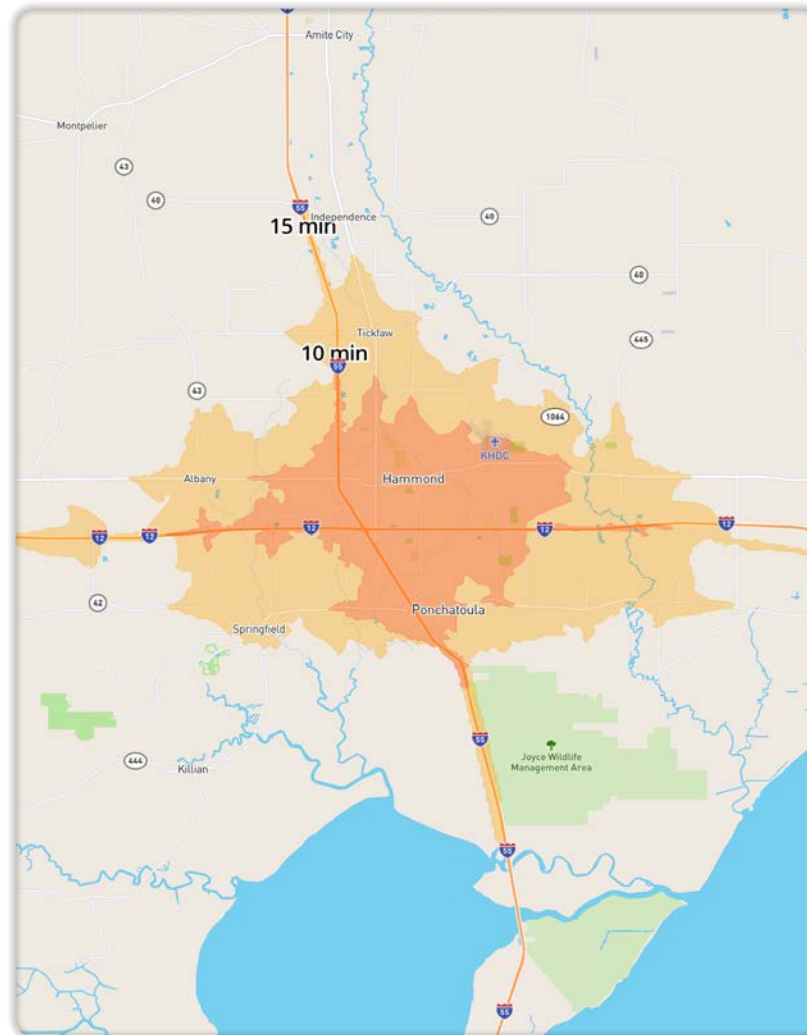


Focus Categories

The top categories for focused growth in the municipality are pulled from a combination of leakage reports, peer analysis, retail trends and real estate intuition. Although these are the top categories, Retail Strategies' efforts are inclusive beyond the defined list. *Let us know how we can help you find a site!*



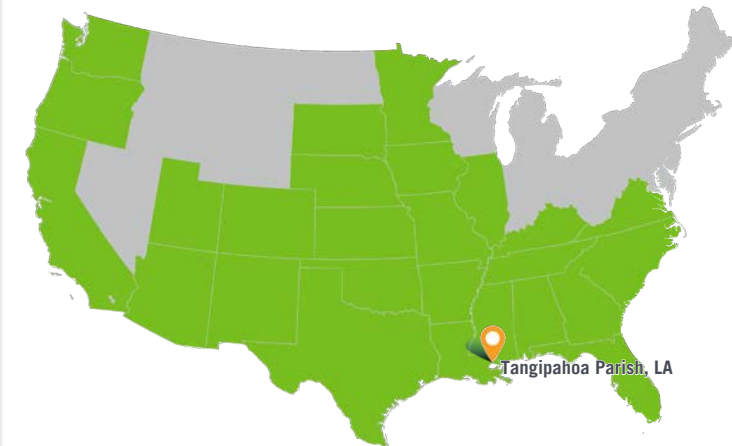
There's a lot of potential here.



DEMOGRAPHIC PROFILE	3 Mile Radius	5 Mile Radius	10 Mile Radius
2018 Estimated Population	33,129	62,826	103,327
Daytime Population	59,637	85,878	115,893
Median HH Income	\$39,634	\$44,703	\$45,782
Number of Households	12,280	23,752	38,829

	10 Minute DT	15 Minute DT	Parish Boundary
2018 Estimated Population	45,825	86,465	132,456
Daytime Population	77,576	104,261	137,189
Median HH Income	\$41,657	\$45,441	\$44,569
Number of Households	17,476	32,534	49,470

*Source: STI PopStats

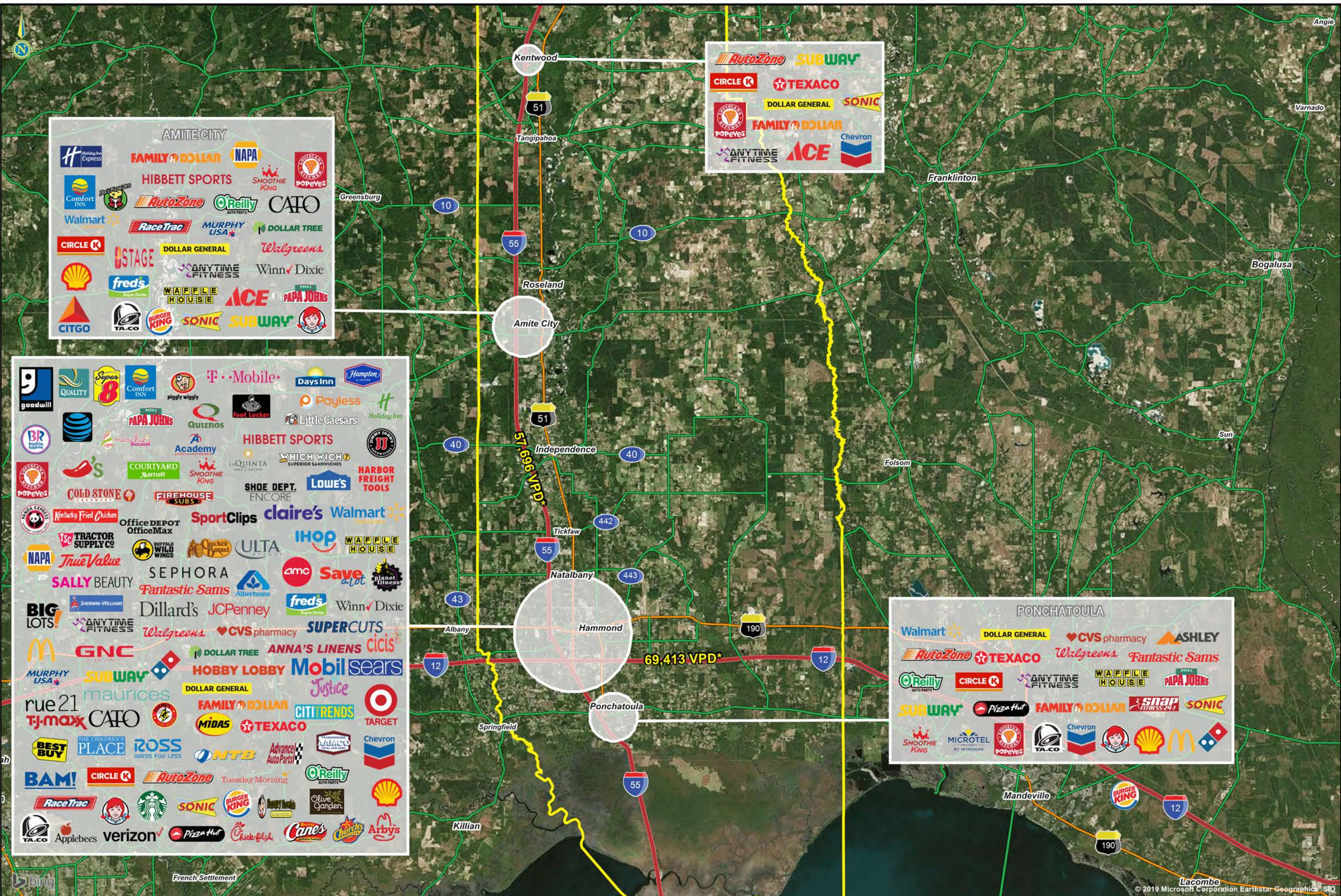


William Turnley
Portfolio Director
wturnley@retailstrategies.com
205.905.5703 office



John Jackson
Retail Development Coordinator
jjackson@retailstrategies.com
205.588.5736 office





TANGIPAHOA PARISH, LOUISIANA
Major Retail & Restaurants